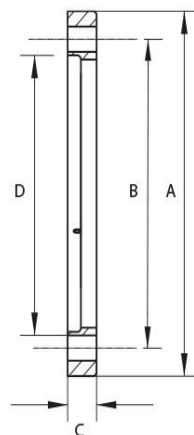


Welding Flange ISO-F

Flange: ISO-F, compatible to ISO-K Flanges (DIN 28404)



Artikelnummer	Material	DN	A	B	C	D
063KL/ISO-F/B	Stainless Steel (1.4301)	DN 63	130.0	110.0	12.0	76.5
100KL/ISO-F/B	Stainless Steel (1.4301)	DN 100	165.0	145.0	12.0	108.6
160KL/ISO-F/B	Stainless Steel (1.4301)	DN 160	225.0	200.0	16.0	160.2
200KL/ISO-F/B	Stainless Steel (1.4301)	DN 200	285.0	220.0	16.0	220.0
250KL/ISO-F/B	Stainless Steel (1.4301)	DN 250	335.0	274.0	16.0	274.0
320KL/ISO-F/B	Stainless Steel (1.4301)	DN 320	425.0	395.0	20.0	324.0
400KL/ISO-F/B	Stainless Steel (1.4301)	DN 400	510.0	480.0	20.0	407.0
500KL/ISO-F/B	Stainless Steel (1.4301)	DN 500	610.0	580.0	20.0	509.0
630KL/ISO-F/B	Stainless Steel (1.4301)	DN 630	750.0	720.0	24.0	661.5



Datasheet

this product is compliant with both REACH and RoHS regulations