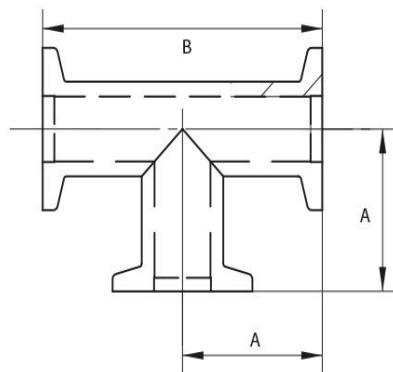


Tee ISO-KF

Flange: ISO-KF, according to DIN 28403



Artikelnummer	Material	DN	A	B
010TS/B	Stainless Steel (1.4301)	DN 10	30.0	60.0
010TS/C	Aluminum	DN 10	30.0	60.0
016TS/B	Stainless Steel (1.4301)	DN 16	40.0	80.0
016TS/C	Aluminum	DN 16	40.0	80.0
025TS/B	Stainless Steel (1.4301)	DN 25	50.0	100.0
025TS/C	Aluminum	DN 25	50.0	100.0
040TS/B	Stainless Steel (1.4301)	DN 40	65.0	130.0
040TS/C	Aluminum	DN 40	65.0	130.0
050TS/B	Stainless Steel (1.4301)	DN 50	70.0	140.0



this product is compliant with both REACH and RoHS regulations