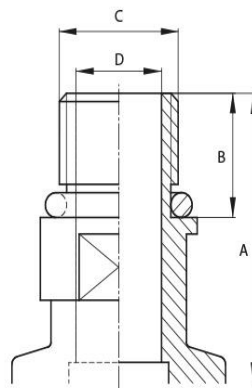


# Screw-in Flange | External Thread

Flange: ISO-KF, according to DIN 28403  
 Leak rate:  $1 \times 10^{-9}$  mbar · l/s



Artikelnummer	Material	DN	A	B	C	D
010ES/B1/4"	Stainless Steel / FPM	DN 10	26.0	9.0	G 1/4"	6
010ES/B3/8"	Stainless Steel / FPM	DN 10	35.0	15.0	G 3/8"	12
016ES/B	Stainless Steel / FPM	DN 16	35.0	15.0	G 1/2"	16
016ES/B/1,5	Stainless Steel / FPM	DN 16	42.0	12.0	M 16 x 1,5	6
016ES/B1/4"	Stainless Steel (1.4301)	DN 16	22.0		G 1/4"	
016ES/C-1,5	Aluminum / FPM	DN 16	42.0	12.0	M 16 x 1,5	6
025ES/B	Stainless Steel / FPM	DN 25	45.0	25.0	G 1"	25
040ES/B	Stainless Steel / FPM	DN 40	50.0	30.0	G 1 1/2"	41



this product is compliant with both REACH and RoHS regulations