

Reducing Flange

Flange: ISO-CF, according to ISO 3669

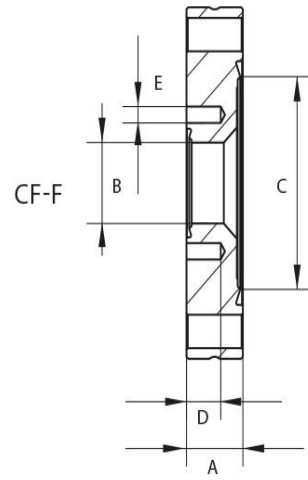
Leak rate: 1×10^{-12} mbar · l/s

Bakeout temperature: up to 400°C



Artikelnummer	Material	DN	A	B	C	D	E
100/40RFCF/B	Stainless Steel (1.4301)	DN 40 / DN 100	20.0	39.0	55	9	6x M6
100/40RFCF/D	Stainless Steel (1.4429)	DN 40 / DN 100	20.0	39.0	55	9	6x M6
100/63RFCF/B	Stainless Steel (1.4301)	DN 63 / DN 100	20.0	66.0	85	11	8x M8
100/63RFCF/D	Stainless Steel (1.4429)	DN 63 / DN 100	20.0	66.0	85	11	8x M8
160/100RFCF/B	Stainless Steel (1.4301)	DN 100 / DN 160	22.0	104.0	120	11	16x M8
160/100RFCF/D	Stainless Steel (1.4429)	DN 100 / DN 160	22.0	104.0	120	11	16x M8
160/40RFCF/B	Stainless Steel (1.4301)	DN 40 / DN 160	22.0	39.0	60	9	6x M6
160/40RFCF/D	Stainless Steel (1.4429)	DN 40 / DN 160	22.0	39.0	60	9	6x M6
160/63RFCF/B	Stainless Steel (1.4301)	DN 63 / DN 160	24.0	66.0	85	13	6x M6
40/16RFCF/B	Stainless Steel (1.4301)	DN 16 / DN 40	13.0	16.0	22	5.5	6x M4
40/16RFCF/D	Stainless Steel (1.4429)	DN 16 / DN 40	13.0	16.0	22	5.5	6x M4
63/40RFCF/B	Stainless Steel (1.4301)	DN 40 / DN 63	17.5	39.0	50	9	6x M6
63/40RFCF/D	Stainless Steel (1.4429)	DN 40 / DN 63	17.5	39.0	50	9	6x M6

CF-F = non-rotatable flange CF-R = rotatable flange



this product is compliant with both REACH and RoHS regulations