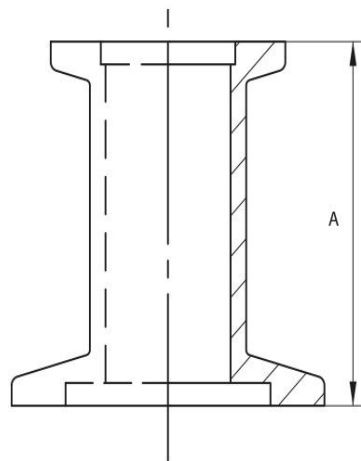


Reducer ISO-KF

Flange: ISO-KF, according to DIN 28403
 Leak rate: 1×10^{-9} mbar · l/s
 Surface: glass-bead blasted



Artikelnummer	Material	DN	A
25/16RS/B	Stainless Steel (1.4301)	DN 16 / DN 25	40.0
25/16RS/C	Aluminum	DN 16 / DN 25	40.0
40/16RS/B	Stainless Steel (1.4301)	DN 16 / DN 40	40.0
40/16RS/C	Aluminum	DN 16 / DN 40	40.0
40/25RS/B	Stainless Steel (1.4301)	DN 25 / DN 40	40.0
40/25RS/C	Aluminum	DN 25 / DN 40	40.0
50/16RS/B	Stainless Steel (1.4301)	DN 50	40.0
50/25RS/B	Stainless Steel (1.4301)	DN 50	40.0
50/40RS/B	Stainless Steel (1.4301)	DN 50	40.0
50/40RS/C	Aluminum	DN 50	40.0



this product is compliant with both REACH and RoHS regulations