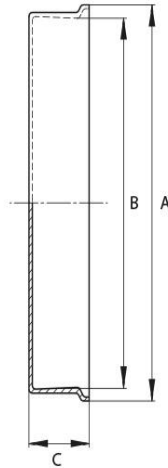


# Protective Cap ISO-KF

Flange: ISO-KF, according to DIN 28403



Artikelnummer	Material	DN	A	B	C
050SD	Polyethylen (PE)	DN 50	77.0	74.0	7.5
10/16SD	Polyethylen (PE)	DN 10 / DN 16	32.0	29.0	7.5
20/25SD	Polyethylen (PE)	DN 20 / DN 25	42.0	39.0	7.5
32/40SD	Polyethylen (PE)	DN 32 / DN 40	57.0	54.0	7.5



this product is compliant with both REACH and RoHS regulations