

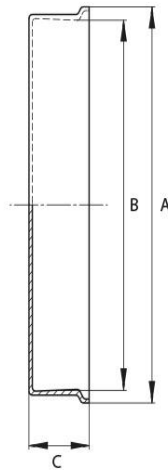
Protective Cap ISO-CF

Flange: ISO-CF, according to ISO 3669



Artikelnummer	Material	DN	A	B	C
016SD/CF	Polyethylen (PE)	DN 16	36.0	34.0	4.5
040SD/CF	Polyethylen (PE)	DN 40	71.5	69.5	7
063SD/CF	Polyethylen (PE)	DN 63	115.5	113.5	10
160SD/CF	Polyethylen (PE)	DN 160	205.0	202.5	10
250SD/CF	Polyethylen (PE)	DN 250	308.5	303.5	30.9

CF-F = non-rotatable flange CF-R = rotatable flange



this product is compliant with both REACH and RoHS regulations