

# Flange with tube ISO-KF

Flange: ISO-KF, according to DIN 28403  
 Leak rate:  $1 \times 10^{-9}$  mbar · l/s  
 Surface: glass-bead blasted



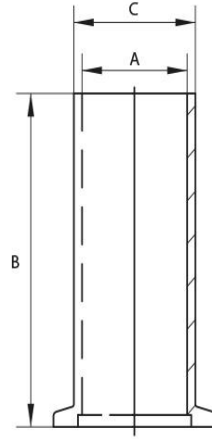
Artikelnummer	Material	DN	A	B	C
010KF020A	Steel	DN 10	10.0	20.0	15
010KF020B	Stainless Steel (1.4301)	DN 10	10.0	20.0	15
010KF020B4404	Stainless Steel (1.4404)	DN 10	10.0	20.0	15
010KF020B4571	Stainless Steel (1.4571)	DN 10	10.0	20.0	15
010KF030B	Stainless Steel (1.4301)	DN 10	10.0	30.0	15
010KF030B4404	Stainless Steel (1.4404)	DN 10	10.0	30.0	15
010KF030B4571	Stainless Steel (1.4571)	DN 10	10.0	30.0	15
010KF040B	Stainless Steel (1.4301)	DN 10	10.0	40.0	15
010KF070A	Steel	DN 10	10.0	70.0	15
010KF070B	Stainless Steel (1.4301)	DN 10	10.0	70.0	15
010KF070B4404	Stainless Steel (1.4404)	DN 10	10.0	70.0	15
010KF070B4571	Stainless Steel (1.4571)	DN 10	10.0	70.0	15
016KF020A	Steel	DN 16	16.0	20.0	20
016KF020B	Stainless Steel (1.4301)	DN 16	16.0	20.0	20
016KF020B4404	Stainless Steel (1.4404)	DN 16	16.0	20.0	20
016KF020B4571	Stainless Steel (1.4571)	DN 16	16.0	20.0	20
016KF030A	Steel	DN 16	16.0	30.0	20
016KF030B	Stainless Steel (1.4301)	DN 16	16.0	30.0	20

# Datasheet

016KF030B4404	Stainless Steel (1.4404)	DN 16	16.0	30.0	20
016KF030B4571	Stainless Steel (1.4571)	DN 16	16.0	30.0	20
016KF040B	Stainless Steel (1.4301)	DN 16	16.0	40.0	20
016KF040B4404	Stainless Steel (1.4404)	DN 16	16.0	40.0	20
016KF040B4571	Stainless Steel (1.4571)	DN 16	16.0	40.0	20
016KF055A	Steel	DN 16	16.0	55.0	20
016KF070A	Steel	DN 16	16.0	70.0	20
016KF070B	Stainless Steel (1.4301)	DN 16	16.0	70.0	20
016KF070B4404	Stainless Steel (1.4404)	DN 16	16.0	70.0	20
016KF070B4571	Stainless Steel (1.4571)	DN 16	16.0	70.0	20
025KF020A	Steel	DN 25	25.0	20.0	30
025KF020B	Stainless Steel (1.4301)	DN 25	25.0	20.0	30
025KF020B4404	Stainless Steel (1.4404)	DN 25	25.0	20.0	30
025KF020B4571	Stainless Steel (1.4571)	DN 25	25.0	20.0	30
025KF030A	Steel	DN 25	25.0	30.0	30
025KF030B	Stainless Steel (1.4301)	DN 25	25.0	30.0	30
025KF030B4404	Stainless Steel (1.4404)	DN 25	25.0	30.0	30
025KF030B4571	Stainless Steel (1.4571)	DN 25	25.0	30.0	30
025KF040B	Stainless Steel (1.4301)	DN 25	25.0	40.0	30
025KF055A	Steel	DN 25	25.0	55.0	30
025KF055B	Stainless Steel (1.4301)	DN 25	25.0	55.0	30
025KF070A	Steel	DN 25	25.0	70.0	30
025KF070B	Stainless Steel (1.4301)	DN 25	25.0	70.0	30
025KF070B4404	Stainless Steel (1.4404)	DN 25	25.0	70.0	30
025KF070B4571	Stainless Steel (1.4571)	DN 25	25.0	70.0	30
040KF020A	Steel	DN 40	40.0	20.0	45
040KF020B	Stainless Steel (1.4301)	DN 40	40.0	20.0	45

# Datasheet

040KF020B4404	Stainless Steel (1.4404)	DN 40	40.0	20.0	45
040KF020B4571	Stainless Steel (1.4571)	DN 40	40.0	20.0	45
040KF030A	Steel	DN 40	40.0	30.0	45
040KF030B	Stainless Steel (1.4301)	DN 40	40.0	30.0	45
040KF030B4404	Stainless Steel (1.4404)	DN 40	40.0	30.0	45
040KF030B4571	Stainless Steel (1.4571)	DN 40	40.0	30.0	45
040KF040B	Stainless Steel (1.4301)	DN 40	40.0	40.0	45
040KF040B4404	Stainless Steel (1.4404)	DN 40	40.0	40.0	45
040KF055A	Steel	DN 40	40.0	55.0	45
040KF055B	Stainless Steel (1.4301)	DN 40	40.0	55.0	45
040KF070A	Steel	DN 40	40.0	70.0	45
040KF070B	Stainless Steel (1.4301)	DN 40	40.0	70.0	45
040KF070B4404	Stainless Steel (1.4404)	DN 40	40.0	70.0	45
040KF070B4571	Stainless Steel (1.4571)	DN 40	40.0	70.0	45
050KF020A	Steel	DN 50	51.0	20.0	57
050KF020B	Stainless Steel (1.4301)	DN 50	51.0	20.0	57
050KF020B4404	Stainless Steel (1.4404)	DN 50	51.0	20.0	57
050KF020B4571	Stainless Steel (1.4571)	DN 50	51.0	20.0	57
050KF030B	Stainless Steel (1.4301)	DN 50	51.0	30.0	57
050KF030B4404	Stainless Steel (1.4404)	DN 50	51.0	30.0	57
050KF040B	Stainless Steel (1.4301)	DN 50	51.0	40.0	57
050KF070A	Steel	DN 50	51.0	70.0	57
050KF070B	Stainless Steel (1.4301)	DN 50	51.0	70.0	57
050KF070B4404	Stainless Steel (1.4404)	DN 50	51.0	70.0	57
050KF070B4571	Stainless Steel (1.4571)	DN 50	51.0	70.0	57



this product is compliant with both REACH and RoHS regulations