

## Flange with Tube ISO-K

Flange: ISO-K, according to DIN 28404

Leak rate:  $1 \times 10^{-9}$  mbar · l/s

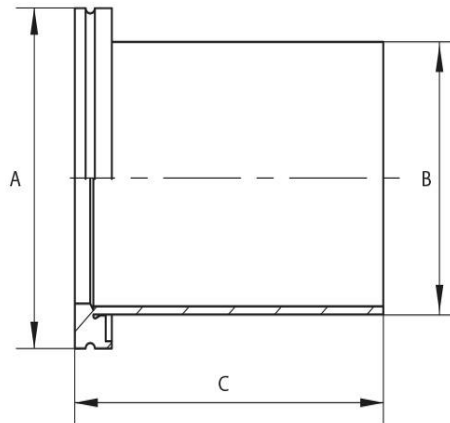
Surface: glass-bead blasted



Artikelnummer	Material	DN	A	B	C
063KR/A	Steel	DN 63	95.0	76.1	100
063KR/B	Stainless Steel (1.4301)	DN 63	95.0	76.1	100
063KR/B L=50mm	Stainless Steel (1.4301)	DN 63	95.0	76.1	50
063KR/B4404	Stainless Steel (1.4404)	DN 63	95.0	76.1	100
063KR/B4571	Stainless Steel (1.4571)	DN 63	95.0	76.1	100
100KR/A	Steel	DN 100	130.0	108.0	100
100KR/B	Stainless Steel (1.4301)	DN 100	130.0	108.0	100
100KR/B4404	Stainless Steel (1.4404)	DN 100	130.0	108.0	100
100KR/B4571	Stainless Steel (1.4571)	DN 100	130.0	108.0	100
160KR/A	Steel	DN 160	180.0	159.0	100
160KR/B	Stainless Steel (1.4301)	DN 160	180.0	159.0	100
160KR/B4404	Stainless Steel (1.4404)	DN 160	180.0	159.0	100
160KR/B4571	Stainless Steel (1.4571)	DN 160	180.0	159.0	100
200KR/A	Steel	DN 200	240.0	219.0	100
200KR/B	Stainless Steel (1.4301)	DN 200	240.0	219.0	100
200KR/B4404	Stainless Steel (1.4404)	DN 200	240.0	219.0	100
200KR/B4571	Stainless Steel (1.4571)	DN 200	240.0	219.0	100
250KR/A	Steel	DN 250	290.0	273.0	100
250KR/B	Stainless Steel (1.4301)	DN 250	290.0	273.0	100

# Datasheet

250KR/B4404	Stainless Steel (1.4404)	DN 250	290.0	273.0	100
250KR/B4571	Stainless Steel (1.4571)	DN 250	290.0	273.0	100
320KR/A	Steel	DN 320	370.0	324.0	100
320KR/B	Stainless Steel (1.4301)	DN 320	370.0	324.0	100
400KR/A	Steel	DN 400	450.0	406.0	100
400KR/B	Stainless Steel (1.4301)	DN 400	450.0	406.0	100
500KR/A	Steel	DN 500	550.0	508.0	100
500KR/B	Stainless Steel (1.4301)	DN 500	550.0	508.0	100



this product is compliant with both REACH and RoHS regulations