

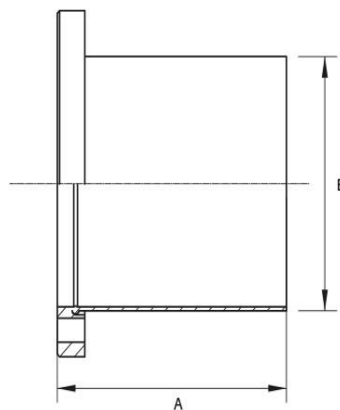
Flange with Tube ISO-F

Flange: ISO-F, compatible to ISO-K Flanges (DIN 28404)

Leak rate: 1×10^{-9} mbar · l/s



| Artikelnummer | Material | DN | A | B |
|---------------|--------------------------|--------|-------|-------|
| 063KR/ISO-F/A | Steel | DN 63 | 100.0 | 76.1 |
| 063KR/ISO-F/B | Stainless Steel (1.4301) | DN 63 | 100.0 | 76.1 |
| 100KR/ISO-F/A | Steel | DN 100 | 100.0 | 108.0 |
| 100KR/ISO-F/B | Stainless Steel (1.4301) | DN 100 | 100.0 | 108.0 |
| 160KR/ISO-F/A | Steel | DN 160 | 100.0 | 159.0 |
| 160KR/ISO-F/B | Stainless Steel (1.4301) | DN 160 | 100.0 | 159.0 |
| 200KR/ISO-F/A | Steel | DN 200 | 100.0 | 219.1 |
| 200KR/ISO-F/B | Stainless Steel (1.4301) | DN 200 | 100.0 | 219.1 |
| 250KR/ISO-F/A | Steel | DN 250 | 100.0 | 273.0 |
| 250KR/ISO-F/B | Stainless Steel (1.4301) | DN 250 | 100.0 | 273.0 |
| 320KR/ISO-F/A | Steel | DN 320 | 100.0 | 323.9 |
| 320KR/ISO-F/B | Stainless Steel (1.4301) | DN 320 | 100.0 | 323.9 |
| 400KR/ISO-F/A | Steel | DN 400 | 100.0 | 406.0 |
| 400KR/ISO-F/B | Stainless Steel (1.4301) | DN 400 | 100.0 | 406.0 |
| 500KR/ISO-F/A | Steel | DN 500 | 100.0 | 508.0 |
| 500KR/ISO-F/B | Stainless Steel (1.4301) | DN 500 | 100.0 | 508.0 |



this product is compliant with both REACH and RoHS regulations