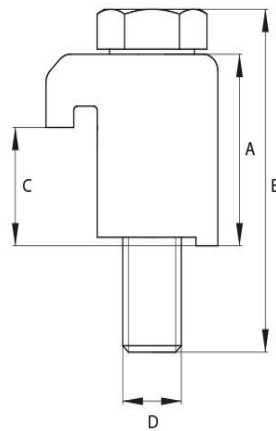


Claw Clamp for Base Plate with Sealing Groove

Flange: ISO-K, according to DIN 28404
 Leak rate: 1×10^{-9} mbar · l/s
 Surface: Zinc plated | Stainless Steel



Artikelnummer	Material	DN	A	B	C
320/500PD/A	Steel	DN 320 - DN 500	31.0	45.0	15
63/100PD/A	Steel	DN 63 - DN 100	18.8	30.0	10
630PD/A	Steel	DN 630	36.5	50.0	20.6
160/250PD/A	Steel	DN 160 - DN 250	19.0	34.0	10



this product is compliant with both REACH and RoHS regulations