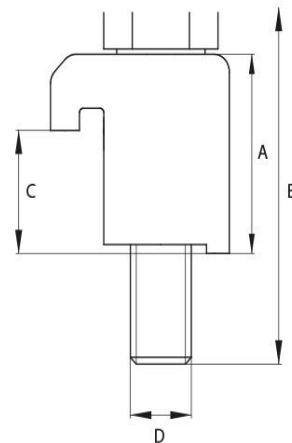


Claw Clamp ISO-K

Flange: ISO-K, according to DIN 28404
 Leak rate: 1×10^{-9} mbar · l/s
 Surface: Zinc plated | Stainless Steel



Artikelnummer	Material	DN	A	B	C
160/250P/A	Steel	DN 160 - DN 250	23.0	34.4	13.9
160/250P/B	Stainless Steel (1.4301)	DN 160 - DN 250	23.0	34.4	13.9
320/500P/A	Steel	DN 320 - DN 500	30.0	43.0	20.6
320/500P/B	Stainless Steel (1.4301)	DN 320 - DN 500	30.0	43.0	20.6
63/100P/A	Steel	DN 63 - DN 100	22.8	35.0	13.9
63/100P/B	Stainless Steel (1.4301)	DN 63 - DN 100	22.8	35.0	13.9
630P/A	Steel	DN 630	41.5	55.0	25.6



this product is compliant with both REACH and RoHS regulations