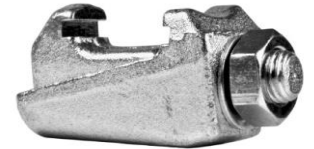


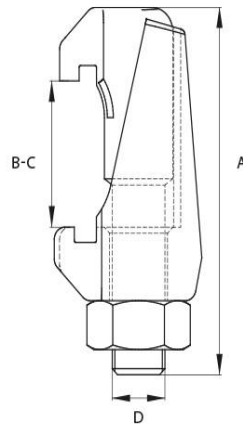
Clamp ISO-K

Flange: ISO-K, according to DIN 28404
 Leak rate: 1×10^{-9} mbar · l/s
 Surface: Zinc plated | Stainless Steel



Artikelnummer	Material	DN	A	B	C
320/500K/A	Steel	DN 320 - DN 500	77.0	29.0	34.5
320/630K/B	Stainless Steel (1.4301)	DN 320 - DN 500	63.0	17.0	27
63/250K/A	Steel	DN 63 - DN 250	63.0	17.0	27
63/250K/B	Stainless Steel (1.4301)	DN 63 - DN 250	63.0	17.0	27
630K/A	Steel	DN 630	86.0	35.0	44

B-C = min | max distance



this product is compliant with both REACH and RoHS regulations