

Centering Ring

Flange: ISO-KF, according to DIN 28403

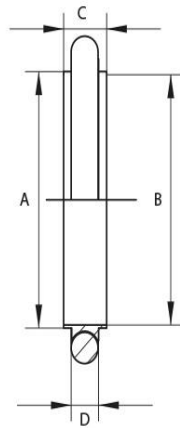
Leak rate: 1×10^{-9} mbar · l/s



Artikelnummer	Material	DN	A	B	C	D
010ZR/BV	Stainless Steel / FPM	DN 10	12.0	10.0	8.0	3.9
010ZR/BV4404	Stainless Steel (1.4404) / FPM	DN 10	12.0	10.0	8.0	3.9
010ZR/BV4571	Stainless Steel (1.4571) / FPM	DN 10	12.0	10.0	8.0	3.9
010ZR/CN	Aluminum / NBR	DN 10	12.0	10.0	8.0	3.9
010ZR/CV	Aluminum / FPM	DN 10	12.0	10.0	8.0	3.9
016ZR/BV	Stainless Steel / FPM	DN 16	17.0	16.0	8.0	3.9
016ZR/BV4404	Stainless Steel (1.4404) / FPM	DN 16	17.0	16.0	8.0	3.9
016ZR/BV4571	Stainless Steel (1.4571) / FPM	DN 16	17.0	16.0	8.0	3.9
016ZR/CN	Aluminum / NBR	DN 16	17.0	16.0	8.0	3.9
016ZR/CV	Aluminum / FPM	DN 16	17.0	16.0	8.0	3.9
025ZR/BV	Stainless Steel / FPM	DN 25	26.0	25.0	8.0	3.9
025ZR/BV4404	Stainless Steel (1.4404) / FPM	DN 25	26.0	25.0	8.0	3.9
025ZR/BV4571	Stainless Steel (1.4571) / FPM	DN 25	26.0	25.0	8.0	3.9
025ZR/CN	Aluminum / NBR	DN 25	26.0	25.0	8.0	3.9
025ZR/CV	Aluminum / FPM	DN 25	26.0	25.0	8.0	3.9
040ZR/BV	Stainless Steel / FPM	DN 40	41.0	40.0	8.0	3.9
040ZR/BV4404	Stainless Steel (1.4404) / FPM	DN 40	41.0	40.0	8.0	3.9
040ZR/BV4571	Stainless Steel (1.4571) / FPM	DN 40	41.0	40.0	8.0	3.9

Datasheet

040ZR/CN	Aluminum / NBR	DN 40	41.0	40.0	8.0	3.9
040ZR/CV	Aluminum / FPM	DN 40	41.0	40.0	8.0	3.9
050ZR/BV	Stainless Steel / FPM	DN 50	42.0	50.0	8.0	3.9
050ZR/BV4404	Stainless Steel (1.4404) / FPM	DN 50	52.0	50.0	8.0	3.9
050ZR/BV4571	Stainless Steel (1.4571) / FPM	DN 50	52.0	50.0	8.0	3.9
050ZR/CN	Aluminum / NBR	DN 50	52.0	50.0	8.0	3.9
050ZR/CV	Aluminum / FPM	DN 50	52.0	50.0	8.0	3.9



this product is compliant with both REACH and RoHS regulations