

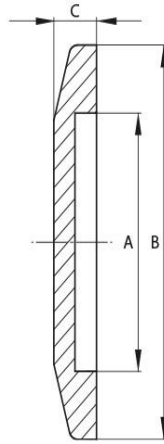
Datasheet

Blank Flange ISO-KF

Flange: ISO-KF, according to DIN 28403
 Leak rate: 1×10^{-9} mbar · l/s
 Surface: glass-bead blasted



Artikelnummer	Material	DN	A	B	C
010BF/B	Stainless Steel (1.4301)	DN 10	12.0	30.0	5
010BF/C	Aluminum	DN 10	12.0	30.0	5
016BF/B	Stainless Steel (1.4301)	DN 16	17.0	30.0	5
016BF/B4404	Stainless Steel (1.4404)	DN 16	17.0	30.0	5
016BF/B4571	Stainless Steel (1.4571)	DN 16	17.0	30.0	5
016BF/C	Aluminum	DN 16	17.0	30.0	5
025BF/B	Stainless Steel (1.4301)	DN 25	26.0	40.0	5
025BF/B4404	Stainless Steel (1.4404)	DN 25	26.0	40.0	5
025BF/B4571	Stainless Steel (1.4571)	DN 25	26.0	40.0	5
025BF/C	Aluminum	DN 25	26.0	40.0	5
040BF/B	Stainless Steel (1.4301)	DN 40	41.0	55.0	5
040BF/B4404	Stainless Steel (1.4404)	DN 40	41.0	55.0	5
040BF/B4571	Stainless Steel (1.4571)	DN 40	41.0	55.0	5
040BF/C	Aluminum	DN 40	41.0	55.0	5
050BF/B	Stainless Steel (1.4301)	DN 50	52.0	75.0	5
050BF/B4404	Stainless Steel (1.4404)	DN 50	52.0	75.0	5
050BF/B4571	Stainless Steel (1.4571)	DN 50	52.0	75.0	5
050BF/C	Aluminum	DN 50	52.0	75.0	5



this product is compliant with both REACH and RoHS regulations