

Blank Flange ISO-K

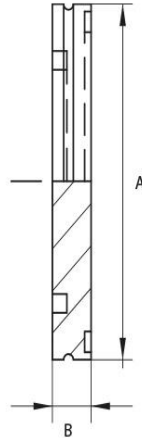
Flange: ISO-K, according to DIN 28404

Leak rate: 1×10^{-9} mbar · l/s

Surface: glass-bead blasted



Artikelnummer	Material	DN	A	B
063BF/A	Steel	DN 63	95.0	12.0
063BF/B	Stainless Steel (1.4301)	DN 63	95.0	12.0
063BF/B4404	Stainless Steel (1.4404)	DN 63	95.0	12.0
063BF/C	Aluminum	DN 63	95.0	12.0
100BF/A	Steel	DN 100	130.0	12.0
100BF/B	Stainless Steel (1.4301)	DN 100	130.0	12.0
100BF/B4404	Stainless Steel (1.4404)	DN 100	130.0	12.0
100BF/C	Aluminum	DN 100	130.0	12.0
160BF/A	Steel	DN 160	180.0	12.0
160BF/B	Stainless Steel (1.4301)	DN 160	180.0	12.0
160BF/B4404	Stainless Steel (1.4404)	DN 160	180.0	12.0
160BF/B4571	Stainless Steel (1.4571)	DN 160	180.0	12.0
160BF/C	Aluminum	DN 100	180.0	12.0
200BF/A	Steel	DN 200	240.0	12.0
200BF/B	Stainless Steel (1.4301)	DN 200	240.0	12.0
200BF/B4571	Stainless Steel (1.4571)	DN 200	240.0	12.0
200BF/C	Aluminum	DN 200	240.0	12.0
250BF/A	Steel	DN 250	290.0	12.0
250BF/B	Stainless Steel (1.4301)	DN 250	290.0	12.0
250BF/B4404	Stainless Steel (1.4404)	DN 250	290.0	12.0
250BF/C	Aluminum	DN 250	290.0	12.0
320BF/A	Steel	DN 320	370.0	17.0
320BF/B	Stainless Steel (1.4301)	DN 320	370.0	17.0
320BF/C	Aluminum	DN 320	370.0	17.0
400BF/A	Steel	DN 400	450.0	17.0
400BF/B	Stainless Steel (1.4301)	DN 400	450.0	17.0
500BF/A	Steel	DN 500	550.0	17.0
500BF/B	Stainless Steel (1.4301)	DN 500	550.0	17.0
630BF/B	Stainless Steel (1.4301)	DN 630	690.0	22.0



this product is compliant with both REACH and RoHS regulations