

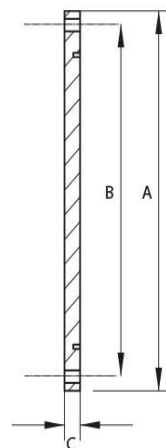
# Blank Flange ISO-F

Flange: ISO-F, compatible to ISO-K Flanges ( DIN 28404)

Leak rate:  $1 \times 10^{-9}$  mbar · l/s



Artikelnummer	Material	DN	A	B	C
063BF/ISO-F/B	Stainless Steel (1.4301)	DN 63	130.0	110.0	12
100BF/ISO-F/B	Stainless Steel (1.4301)	DN 100	165.0	145.0	12
160BF/ISO-F/B	Stainless Steel (1.4301)	DN 160	225.0	200.0	16
200BF/ISO-F/B	Stainless Steel (1.4301)	DN 200	285.0	260.0	16
250BF/ISO-F/B	Stainless Steel (1.4301)	DN 250	335.0	310.0	16
320BF/ISO-F/B	Stainless Steel (1.4301)	DN 320	425.0	395.0	20
400BF/ISO-F/B	Stainless Steel (1.4301)	DN 400	510.0	480.0	20
500BF/ISO-F/B	Stainless Steel (1.4301)	DN 500	610.0	580.0	20
630BF/ISO-F/B	Stainless Steel (1.4301)	DN 630	750.0	720.0	24



# Datasheet

this product is compliant with both REACH and RoHS regulations