

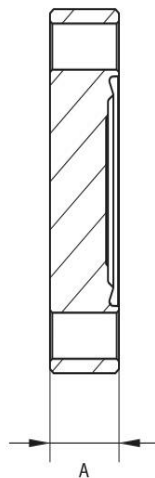
Blank Flange ISO-CF

Flange: ISO-CF, according to ISO 3669
 Leak rate: 1×10^{-12} mbar · l/s
 Bakeout temperature: up to 400°C
 Surface: glass-bead blasted



Artikelnummer	Material	DN	A
016BCFD/B	Stainless Steel (1.4301)	DN 16	7.5
016BCFF/B	Stainless Steel (1.4301)	DN 16	7.5
040BCFD/B	Stainless Steel (1.4301)	DN 40	13.0
040BCFF/B	Stainless Steel (1.4301)	DN 40	13.0
063BCFD/B	Stainless Steel (1.4301)	DN 63	17.5
063BCFF/B	Stainless Steel (1.4301)	DN 63	17.5
100BCFD/B	Stainless Steel (1.4301)	DN 100	20.0
100BCFF/B	Stainless Steel (1.4301)	DN 100	20.0
160BCFD/B	Stainless Steel (1.4301)	DN 160	22.0
160BCFF/B	Stainless Steel (1.4301)	DN 160	22.0
200BCFD/B	Stainless Steel (1.4301)	DN 200	24.5
200BCFF/B	Stainless Steel (1.4301)	DN 200	24.5
250BCFD/B	Stainless Steel (1.4301)	DN 250	24.5
250BCFF/B	Stainless Steel (1.4301)	DN 250	24.5

CF-F = non-rotatable flange CF-R = rotatable flange



this product is compliant with both REACH and RoHS regulations