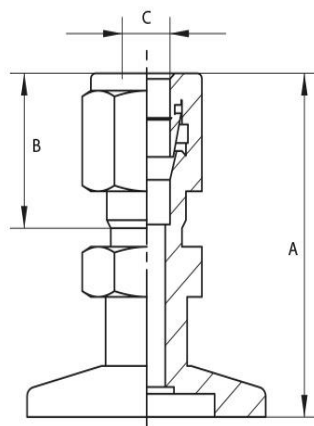


Adapter Swagelok

Flange: ISO-KF, according to DIN 28403
 Leak rate: 1×10^{-9} mbar · l/s
 Surface: glass-bead blasted



Artikelnummer	Material	DN	A	B	C
016KF1/8SW	Stainless Steel (1.4301)	DN 16	34.5	12.7	1/8"
016KF6SW	Stainless Steel (1.4301)	DN 16	37.0	15.3	6
025KF1/4SW	Stainless Steel (1.4301)	DN 25	37.0	15.3	1/4"
025KF10SW	Stainless Steel (1.4301)	DN 25	45.0	17.2	10
040KF1/2SW	Stainless Steel (1.4301)	DN 40	47.5	22.8	1/2"
040KF1/4SW	Stainless Steel (1.4301)	DN 40	37.0	15.3	1/4"
040KF16SW	Stainless Steel (1.4301)	DN 40	53.0	24.4	16



this product is compliant with both REACH and RoHS regulations