

Adapter NPT | external Thread

Flange: ISO-KF, according to DIN 28403

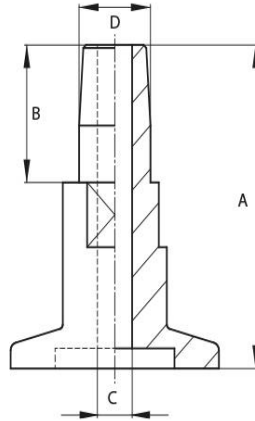
Leak rate: 1×10^{-9} mbar · l/s

Surface: glass-bead blasted



Artikelnummer	Material	DN	A	B	C	D
016NPT1/4"AG	Stainless Steel (1.4301)	DN 16	40.0	22.0	7	1/4" – 18NPT
016NPT1/8AG	Stainless Steel (1.4301)	DN 16	40.0	17.0	5	1/8" – 27NPT
025NPT1/2AG	Stainless Steel (1.4301)	DN 25	50.0	30.0	14	1/2" – 14NPT
025NPT1/4AG	Stainless Steel (1.4301)	DN 25	40.0	22.0	7	1/4" – 18NPT
025NPT1/8AG	Stainless Steel (1.4301)	DN 25	40.0	17.0	5	1/8" – 27NPT
025NPT1AG	Stainless Steel (1.4301)	DN 25	60.0	32.0	25	1" – 11 1/2NPT
040NPT1/2AG	Stainless Steel (1.4301)	DN 40	50.0	30.0	14	1/2" – 14NPT
040NPT1/4AG	Stainless Steel (1.4301)	DN 40	40.0	21.0	7	1/4" – 18NPT
040NPT11/2AG	Stainless Steel (1.4301)	DN 40	50.0	28.0	32	1 1/2" – 11 1/2NPT
040NPT11/4AG	Stainless Steel (1.4301)	DN 40	50.0	31.5	32	1 1/4" – 11 1/2 NPT
040NPT1AG	Stainless Steel (1.4301)	DN 40	60.0	33.0	25	1" – 11 1/2NPT
040NPT2AG	Stainless Steel (1.4301)	DN 40	50.0	27.0	40	2" – 11 1/2 NPT

D= thread



this product is compliant with both REACH and RoHS regulations