

## Adapter ISO-KF | ISO-K

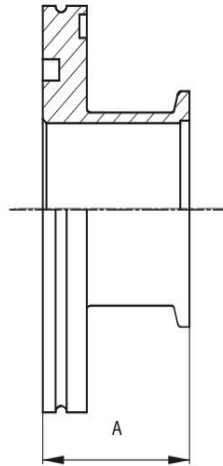
Flange: ISO-KF, according to DIN 28403 | ISO-K, according to DIN 28404

Leak rate:  $1 \times 10^{-9}$  mbar · l/s

Surface: glass-bead blasted



Artikelnummer	Material	DN	A
25/63ÜS/B	Stainless Steel (1.4301)	DN 25 / DN 63	50.0
40/100ÜS/B	Stainless Steel (1.4301)	DN 40 / DN 100	40.0
40/63ÜS/B	Stainless Steel (1.4301)	DN 40 / DN 63	40.0
40/63ÜS/C	Aluminum	DN 40 / DN 63	40.0
50/63ÜS/B	Stainless Steel (1.4301)	DN 50 / DN 63	45.0
50/63ÜS/C	Aluminum	DN 50 / DN 63	45.0



this product is compliant with both REACH and RoHS regulations