

## Adapter ISO-KF | ISO-CF

Flange: ISO-CF, according to ISO 3669 | ISO-KF, according to DIN 28403

Leak rate:  $1 \times 10^{-12}$  mbar · l/s

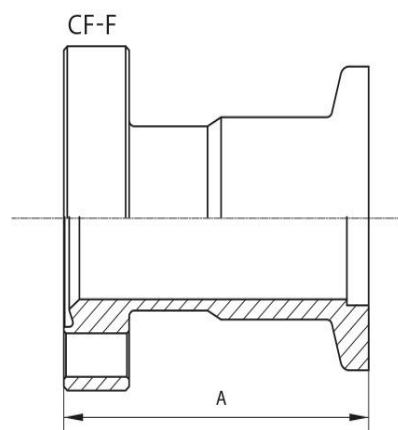
Bakeout temperature: up to 400°C

Surface: glass-bead blasted



Artikelnummer	Material	DN	A
100/40ÜSCF/KF	Stainless Steel (1.4301)	DN 40 / DN 100	50.0
16/16ÜSCF/KF	Stainless Steel (1.4301)	DN 16	35.0
16/25ÜSCF/KF	Stainless Steel (1.4301)	DN 16 / DN 25	35.0
40/16ÜSCF/KF	Stainless Steel (1.4301)	DN 16 / DN 40	30.0
40/25ÜSCF/KF	Stainless Steel (1.4301)	DN 25 / DN 40	30.0
40/40ÜSCF/KF	Stainless Steel (1.4301)	DN 40	50.0
63/40ÜSCF/KF	Stainless Steel (1.4301)	DN 40 / DN 63	35.0

CF-F = non-rotatable flange CF-R = rotatable flange



this product is compliant with both REACH and RoHS regulations