

Adapter ISO-K | ISO-CF

Flange: ISO-CF, according to ISO 3669 | ISO-K, according to DIN 28404

Leak rate: 1×10^{-12} mbar · l/s

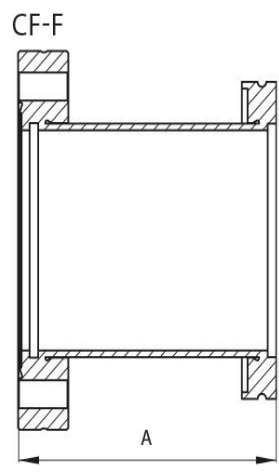
Bakeout temperature: up to 400°C

Surface: glass-bead blasted



Artikelnummer	Material	DN	A
063ÜS/B	Stainless Steel (1.4301)	DN 63	90.0
100ÜS/B	Stainless Steel (1.4301)	DN 100	90.0
160ÜS/B	Stainless Steel (1.4301)	DN 160	90.0

CF-F = non-rotatable flange CF-R = rotatable flange



this product is compliant with both REACH and RoHS regulations